

SPECIFICATIONS & OPERATING INSTRUCTIONS

OPERATING SHUT HEIGHT:	8-3/8" (212.7mm)
MIN. SHUT HEIGHT:	8-3/16" (208.0mm)
UNIT OPEN HEIGHT:	9" (228mm)
DIE HEIGHT:	3-1/2" (88.9mm)

MIN. DIE CLEARANCE:	Die Clearance is preset at factory
MAX. MATERIAL THICKNESS (MILD STEEL):	1/4" (6.4mm)
MAX. MATERIAL THICKNESS (STAINLESS STEEL):	3/32" (2.4mm)

6300

Flat Stock Cutoff Units

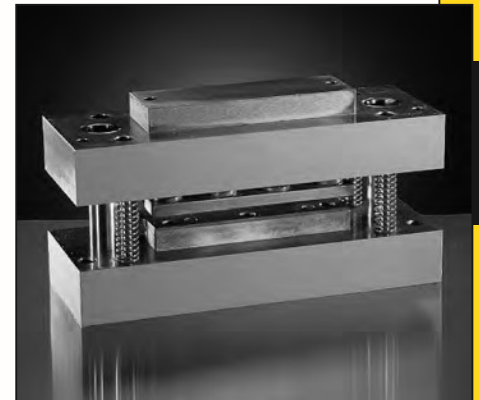
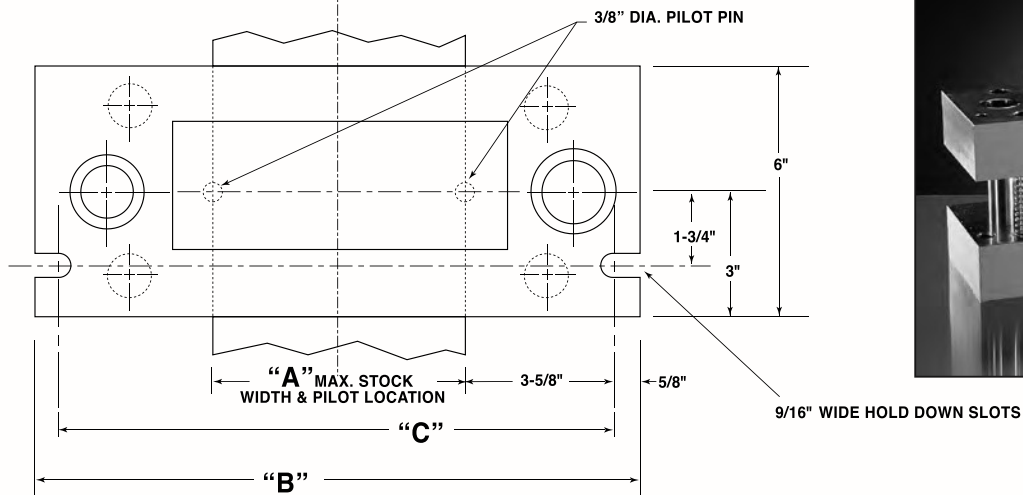
6300 - FLAT STOCK CUTOFF UNITS

Part No.	Max. Cutoff Width A	B	C	Max. Tonnage	Shipping Weight
6300-200	2"	10½"	9¼"	14	85 lbs.
6300-400	4"	12½"	11¼"	28	101 lbs.
6300-600	6"	14½"	13¼"	42	116 lbs.
6300-800	8"	16½"	15¼"	56	133.5 lbs.

Note: For sizes not shown, contact UniPunch Sales Department for application information and pricing.

Note: Punch & die steels in Flat Stock Cutoff Units are not interchangeable. Units must be returned to factory for replacement. Spare punch & die steels can be supplied with new units.

UniPunch "A" Series 6300 Flat Stock Cutoff Units are a self-contained two post die shearing unit available in widths up to 8" (203.2mm). These units can be mounted in a press or press brake in conjunction with other "A" Series tooling or can be used for stand-alone cut to length applications in mild steel up to 1/4" (6.4mm) thickness. Other widths can be manufactured to your requirements.



A SERIES

