

G Series

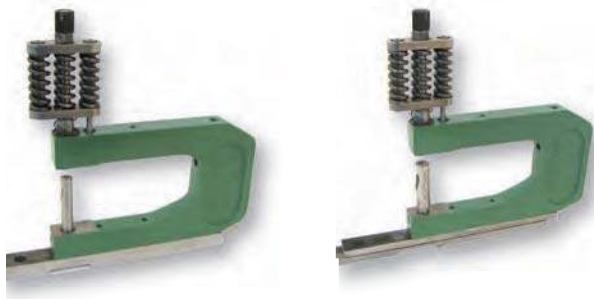
G - Triple Spring Unit

- 7-1/2" shut height
- Material Thickness up to 3/16"
- Adjustable punch head extends tool life

G Units (Page 70)

The UniPunch 'G' Series Triple Spring Unit has a 7½" shut height. They are designed for round hole punching. The advantage of the Triple Spring Unit comes from the additional stripping spring force that allows the unit to be used to punch .3125" round holes in 3/16" material. (For thicker punching applications, see the "A" or "B" series.)

G - Triple Spring

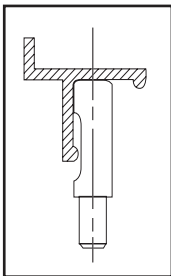


Fixed Base

Adjustable Base

The G series units are mounted to the UniPunch 5110 bed rail with either the fixed base or the adjustable base. The fixed base is designed for straight line punching. The adjustable base allows 3/4" adjustment front to back (a total of 1 ½").

G Series Usage



'G' Series units are designed for punching holes as close as ¾" center-to-center. These units feature a pedestal die which is an advantage for punching formed parts such as aluminum extrusions, roll formed parts and small channels and angles because the pedestal die can be modified to accommodate the profile of the part.

(For flat parts with close hole centers, UniPunch recommends the BX-3/4 because it can be used alongside other B series units. (See page 55). The G-3/4 units are commonly used by storm door and window manufacturers and in the recreational vehicle industry and by fabricators of other aluminum extrusions.